

**TOOLING & AUTOMATION**

Molds Fixtures Gages



# INDEX



| COMPONENT                             | PAGE |
|---------------------------------------|------|
| STANDARD TOOLING COMPONENT SAMPLES    | 3    |
| 3 BUTTON DATE INSERT                  | 4    |
| SPECIAL ORDER DATE INSERT             | 5    |
| STRIKER PLATE                         | 6    |
| I.D. INSERTS ( A PLATE )              | 7    |
| I.D. INSERTS ( B&C PLATES )           | 8    |
| FPM STANDARD SCREW-IN- PINS           | 9    |
| FPM STANDARD SCREW- IN-BUSHINGS       | 10   |
| FPM CUSTOM WRENCH                     | 11   |
| FPM SMALL PIN AND BUSHING BLOCKS      | 12   |
| 2" SUPER PIN                          | 13   |
| 2" SUPER BUSHING / PIN / BUSHING SHIM | 14   |
| PINCH BAR                             | 15   |
| PINCH BAR AIR ACTIVATED               | 16   |
| PINCH BAR REPLACEMENT PARTS           | 17   |
| SHIPPING STRAP                        | 18   |
| KNOCKS-OUTS                           | 19   |
| BLOW NEEDLE                           | 20   |
| VENTS AND VENT CLEANER                | 21   |
| AIR/ HYDRAULIC MANIFOLD               | 22   |
| 8 PORT AIR MANIFOLD                   | 22   |
| RISERS                                | 23   |
| QUICK MOUNT / ID PLATES               | 24   |
| CRASH PAD & SHIM                      | 25   |
| FORK TUBES                            | 26   |
| FORK TUBE MOUNTING FLANGE             | 26   |
| WATER BAFFLE                          | 27   |

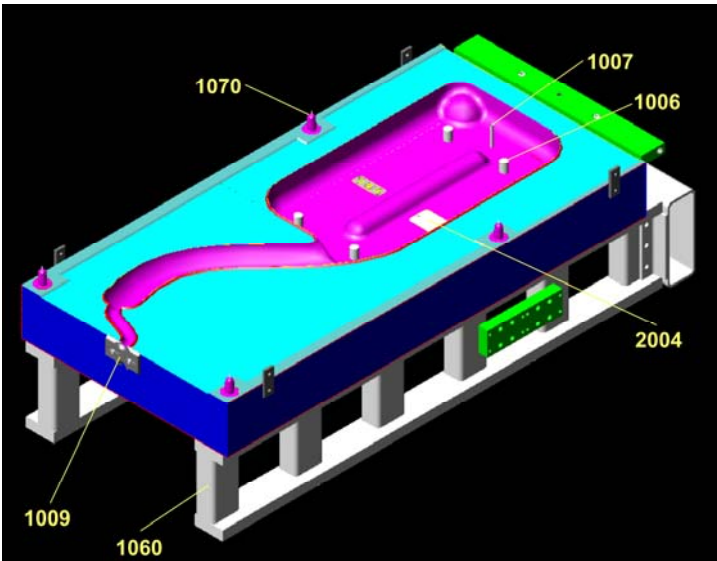
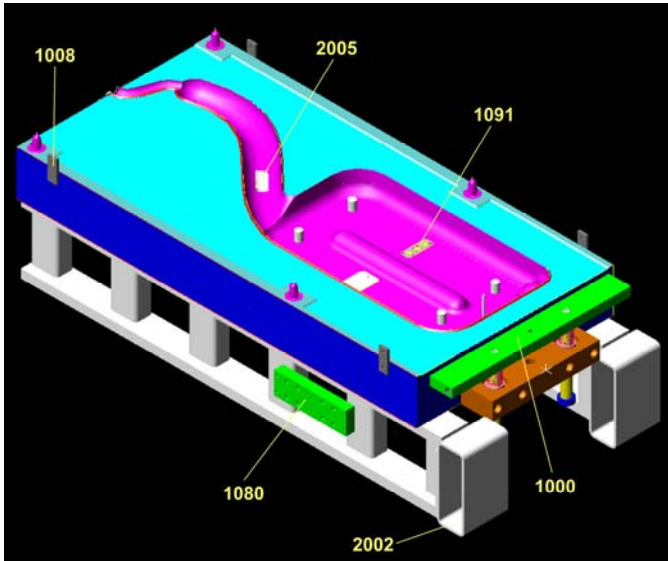
## LEADERSHIP ROLE IN STANDARDIZING COMPONENTS

Parts standardization has enabled FPM to develop and implement a competitive plan to streamline our operation for success. FPM's part standardization for industrial blow molds has established a systematic approach to eliminating waste and creates flow throughout our manufacturing process. This, in turn, allows FPM to meet customer demands for high-quality, low-cost products, delivered quickly and without the expense of custom engineering and manufacturing.

**Benefits of Standardization include:** respond to customer needs and schedules with more flexibility, overall equipment effectiveness, improved lead time, part performance and delivery, lower manufacturing costs, increased machine capacity levels, productivity and quality performance, improved inventory control and available replacement parts.



# STANDARD TOOLING COMPONENT SAMPLES



| COMPONENT NO. | DESCRIPTION                  | COMPONENT NO. | DESCRIPTION   |
|---------------|------------------------------|---------------|---------------|
| 1000          | Pinch Bars                   | 1006          | Knockouts     |
| 1008          | Shipping Strap               | 1007          | Blow Needle   |
| 1080          | Air/Hydraulic Stock Manifold | 1009          | Striker Plate |
| 1091          | Date Wheel                   | 1060          | Steel Riser   |
| 2002          | Fork Tube                    | 1070          | Screw In Pin  |
| 2005          | I.D. Plate                   | 2004          | I.D. Plate    |

CAD 2D

1090

CAD 3D

ACAD

1090-MDY

1090-MDS

1090-MDS\_00

E-DRAWINGS

1090

CNC

1090-MDY

1090-MDS

1090-MDS\_00

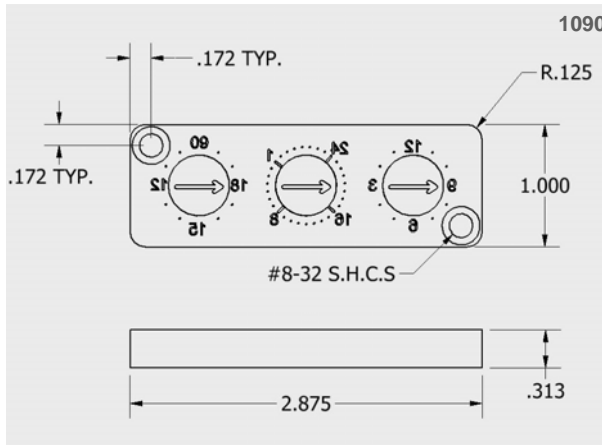
### 3 BUTTON DATE INSERTS

#### STANDARD 3 BUTTON DATE INSERT

The standard 3 button date insert is made of 6061 aluminum and includes 3 standard date code buttons. Insert is removable from cavity face.

Standard 3 button date inserts are available in Month-Day-Year (as shown) and Month-Day-Shift (with and without year button).

Standard buttons (Part No. 1092) are easily adjusted in the mold with a screwdriver.



| COMPONENT NO. | OPTION          |
|---------------|-----------------|
| 1090-MDY      | MONTH-DAY-YEAR  |
| 1090-MDS      | MONTH-DAY-SHIFT |
| 1090-MDS-00 * | YEAR BUTTON     |

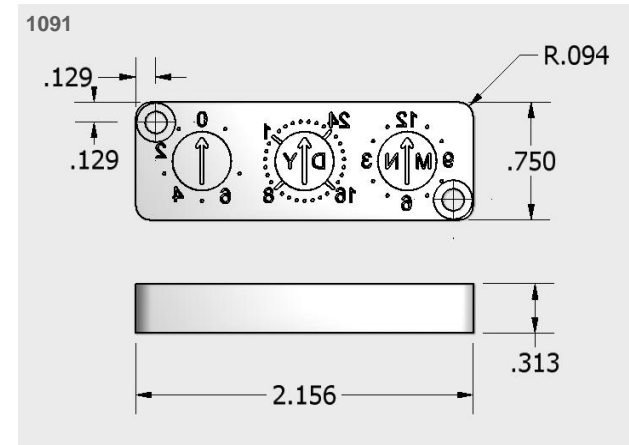
\* When ordering 1090-MDS-00 you must supply the year. Ex: 1090-MDS\_10 for 2010.

#### MINIATURE 3 BUTTON DATE INSERT

The miniature 3 button date insert is made of 6061 aluminum and includes 3 miniature date code buttons. Insert is removable from cavity face.

Miniature 3 button date inserts are available in Month-Day-Year (as shown) and Month-Day-Shift (with and without year button).

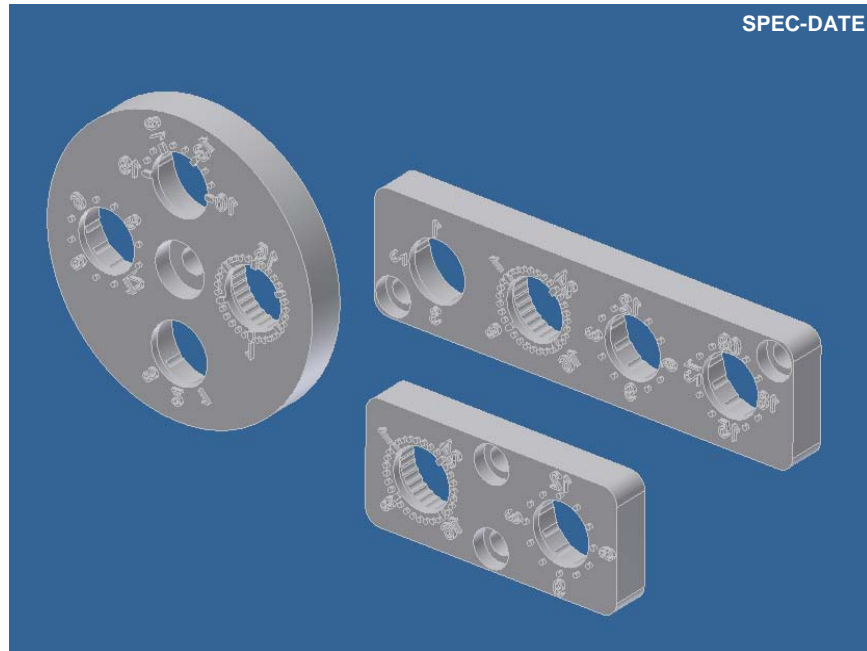
Standard buttons (Part No. 1093) are easily adjusted in the mold with a screwdriver.



| COMPONENT NO. | OPTION          |
|---------------|-----------------|
| 1091-MDY      | MONTH-DAY-YEAR  |
| 1091-MDS      | MONTH-DAY-SHIFT |
| 1091-MDS-00 * | YEAR BUTTON     |

\* When ordering 1091-MDS\_00 you must supply the year. Ex: 1091-MDS\_10 for 2010.

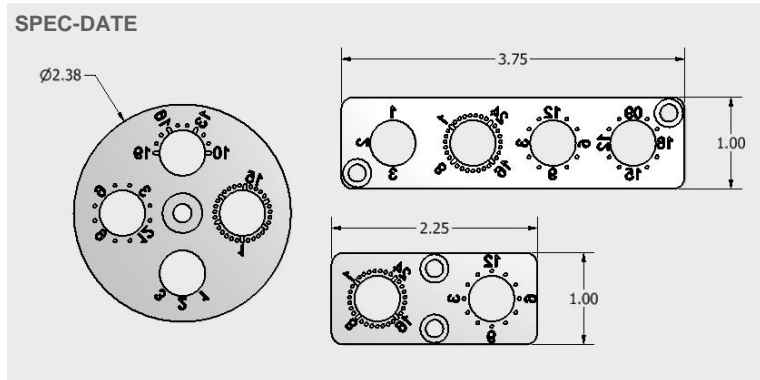
## SPECIAL ORDER DATE INSERT



### SPECIAL ORDER DATE INSERT

Whatever your needs, we will be happy to quote, design and manufacture a special configuration date insert for you.

Please contact us at 800.376.6653 for pricing and delivery.



CAD 2D

1009

CAD 3D

ACAD

1009-35-5

1009-55-5

1009-35-68

1009-55-68

1009-35-75

1009-55-75

E-DRAWINGS

1009

CNC

1009-35-5

1009-55-5

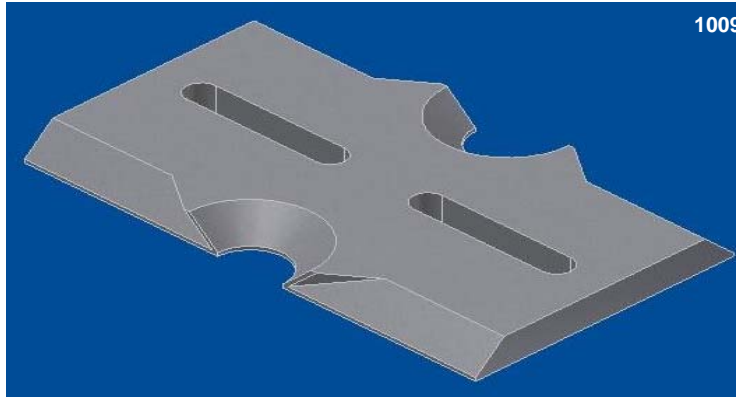
1009-35-68

1009-55-68

1009-35-75

1009-55-75

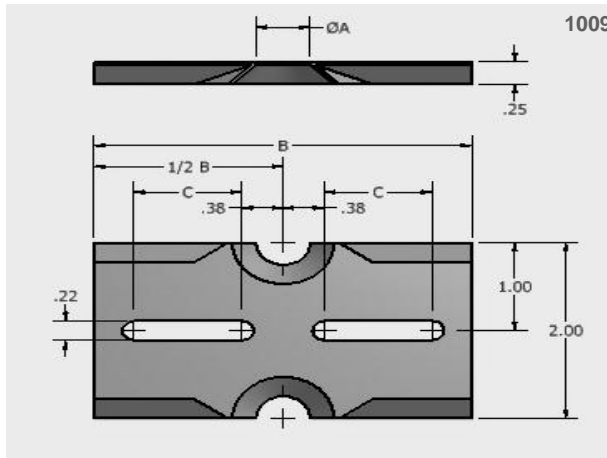
# STRIKER PLATE



## STRIKER PLATE

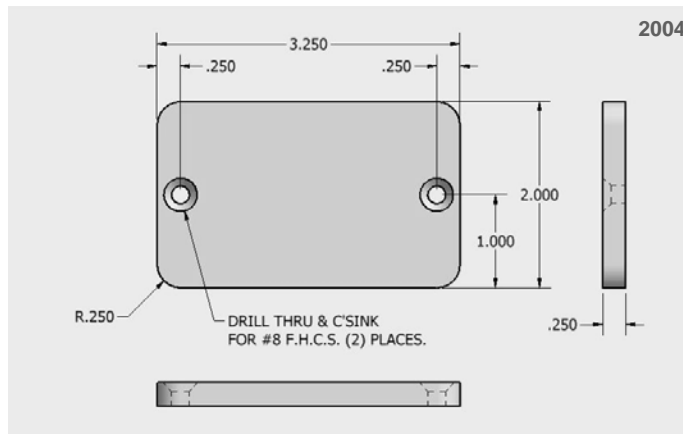
FPM Striker Plates are made with mounting slots to allow for side-to-side adjustments.

Made from Flat Ground Tool Steel.



| COMPONENT NO. | "A"   | "B"  | "C"  |
|---------------|-------|------|------|
| 1009-35-5     | 0.505 | 3.50 | 1.00 |
| 1009-55-5     | 0.505 | 5.50 | 1.50 |
| 1009-35-68    | 0.680 | 3.50 | 1.00 |
| 1009-55-68    | 0.680 | 5.50 | 1.50 |
| 1009-35-75    | 0.750 | 3.50 | 1.00 |
| 1009-55-75    | 0.750 | 5.50 | 1.50 |

## I.D. INSERTS (A PLATE)



### I.D. INSERTS

All I.D. Inserts can be engraved to your specifications. Engraving must be specified at time of ordering. The I.D. inserts are easily removed from cavity face.

Call us for a quote on engraving.

Made from 6061 Aluminum.

CAD 2D

2004

CAD 3D

ACAD

2004

E-DRAWINGS

2004

CNC

2004

CAD 2D

2005-313

2005-5

2006-313

2006-5

CAD 3D

ACAD

2005-313

2005-5

2006-313

2006-5

E-DRAWINGS

2005

2006

CNC

2005-313

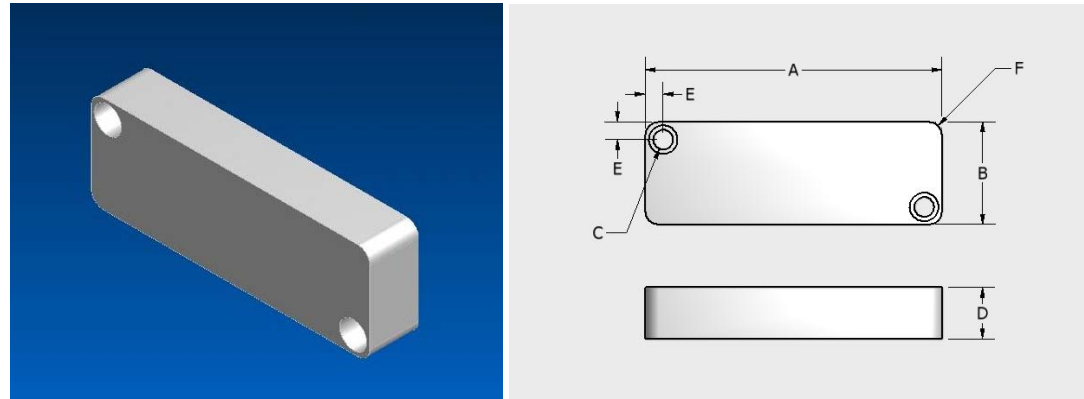
2005-5

2006-313

2006-5

PAGE 8

## I.D. INSERTS (B&C PLATES)



| COMPONENT NO. | "A"   | "B"   | "C"                                 | "D"   | "E"   | "F"   |
|---------------|-------|-------|-------------------------------------|-------|-------|-------|
| 2005-313      | 2.156 | 0.750 | 0.154 Thru 0.25 x 0.130 dp. C'bore  | 0.313 | 0.129 | 0.094 |
| 2005-5        | 2.156 | 0.750 | 0.154 Thru 0.25 x 0.375 dp. C'bore  | 0.500 | 0.129 | 0.094 |
| 2006-313      | 2.875 | 1.000 | 0.194 Thru 0.281 x 0.187 dp. C'bore | 0.313 | 0.172 | 0.125 |
| 2006-5        | 2.875 | 1.000 | 0.194 Thru 0.281 x 0.375 dp. C'bore | 0.500 | 0.172 | 0.125 |

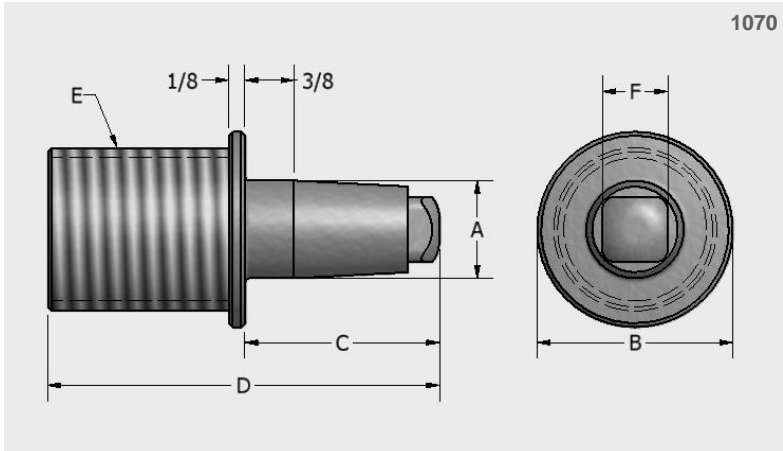
### I.D. INSERTS (B&C PLATES)

All I.D. Inserts can be engraved to your Specifications. Engraving must be specified at time of ordering.\* The I.D. Inserts are easily removed from cavity face. Call us for a quote on engraving and contouring.

2005-313 & 2006-313 are designed to be placed on a flat cavity surface. 2005-5 & 2006-5 are designed to be contoured to match mold surface.

Made from 6061 Aluminum.

# FPM STANDARD SCREW-IN-PINS



| COMPONENT NO. | "A"            | "B"            | "C"  | "D"  | "E"       |
|---------------|----------------|----------------|------|------|-----------|
| 1070-34 H/P   | 0.749<br>0.748 | 1.498<br>1.496 | 1.25 | 3.0  | 1 1/4"-12 |
| 1070-1 H/P    | 0.999<br>0.998 | 1.748<br>1.746 | 1.75 | 3.75 | 1 1/2"-12 |

| COMPONENT NO.    | 1078-34H  | 1078-1H  |
|------------------|-----------|----------|
| MATCHING PIN     | 1070-34HP | 1070-1HP |
| MATCHING BUSHING | 1071-34HB | 1071-1HB |

## FPM STANDARD SCREW-IN-PINS

All FPM pins and bushings are manufactured to close tolerances to maintain a smooth, yet firm running fit. These pins can be easily installed and removed from the cavity side using the machined wrench flats. Custom wrench can be purchased separately. One end of wrench is for the pins and the other is for the bushings.

Made of A-2 steel and hardened.

To order individual screw-in-pin specify component number 1070-\*

To order a screw-in-pin and bushing set specify component number 1078-\*

Also available in 303 stainless steel.



CAD 2D

1070

1078

CAD 3D

ACAD

1070-34

1070-1

1072-34

1072-1

## E-DRAWINGS

1070

1072

CNC

1070-34

1070-1

1072-34

1072-1

CAD 2D

1071

1078

CAD 3D

ACAD

1071-34

1071-1

E-DRAWINGS

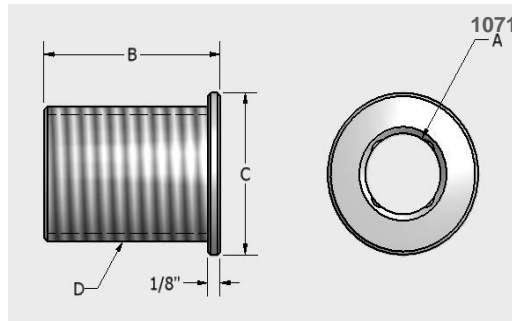
1071

CNC

1071-34

1071-1

## FPM STANDARD SCREW-IN-BUSHINGS



| COMPONENT NO. | "A"            | "B"            | "C"  | "D"       |
|---------------|----------------|----------------|------|-----------|
| 1071-34HB     | 0.751<br>0.750 | 1.498<br>1.496 | 1.75 | 1 1/4"-12 |
| 1071-1HB      | 1.001<br>1.000 | 1.748<br>1.746 | 2.0  | 1 1/2"-12 |

### FPM STANDARD SCREW-IN-BUSHINGS

All FPM pins and bushings are manufactured to close tolerances to maintain a smooth, yet firm running fit. These bushings can be easily installed and removed from the cavity side using the machined wrench notches. Custom wrench can be purchased separately.

To order individual Screw-In-Bushing specify component number 1071-\*

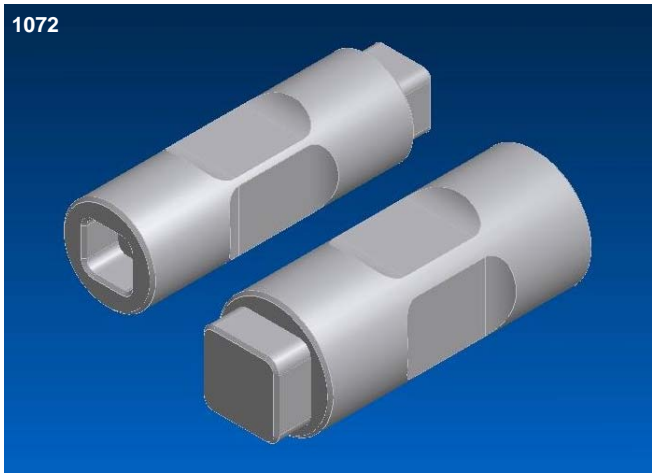
To order a Screw-In-Pin and Bushing Set specify component number 1078-\*

Also available in 303 stainless steel.

| COMPONENT NO.           | 1078-34   | 1078-1   |
|-------------------------|-----------|----------|
| <b>MATCHING PIN</b>     | 1070-34HP | 1070-1HP |
| <b>MATCHING BUSHING</b> | 1071-34HB | 1071-1HB |



# FPM CUSTOM WRENCH



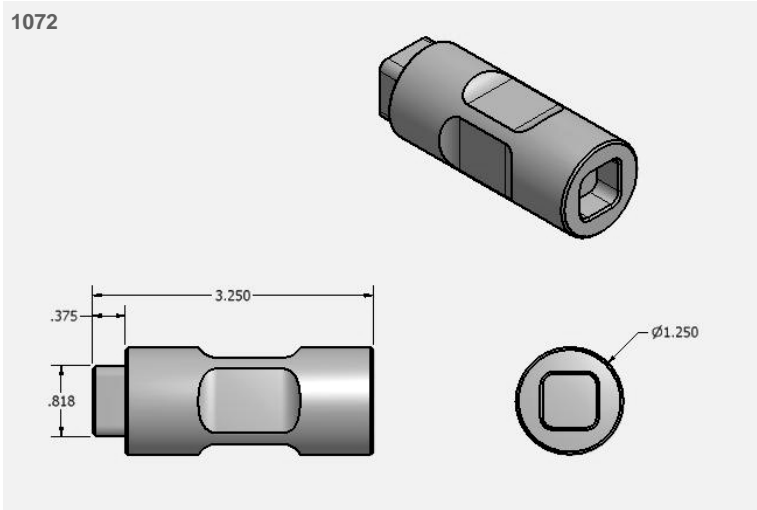
## FPM CUSTOM WRENCH

FPM Custom Wrenches are manufactured to close tolerances to maintain a smooth, yet firm running fit. These wrenches ease the installation and removal of FPM pins and bushings from the molds. One end of wrench is for the pins and the other is for the bushings.

Wrench 1072-34 is use to remove or install 1070-34 pin or 1071-34 bushing.

Wrench 1072-1 is use to remove or install 1070-1 pin or 1071-1 bushing.

| COMPONENT NO. | 1072-34 | 1072-1 |
|---------------|---------|--------|
|---------------|---------|--------|



CAD 2D

1072

CAD 3D

ACAD

1072-34

1072-1

E-DRAWINGS

1072

CNC

1072-34

1072-1

CAD 2D

ACAD

1096-34  
1096-1

E-DRAWINGS

1096-34  
1096-1

CNC

1096-34  
1096-1

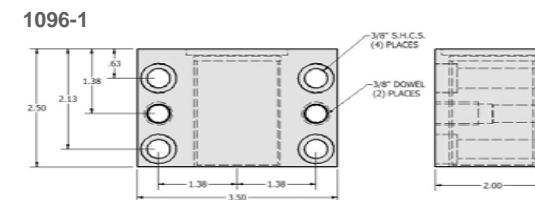
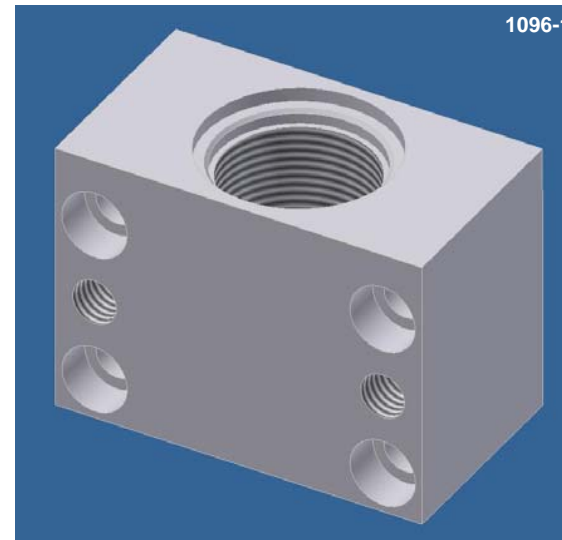
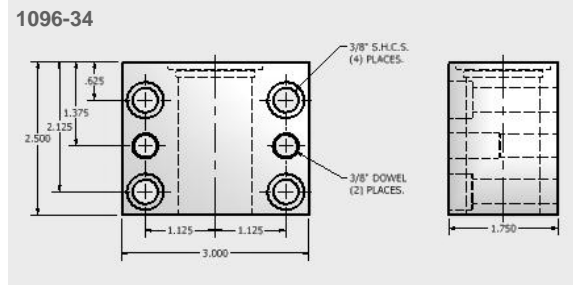
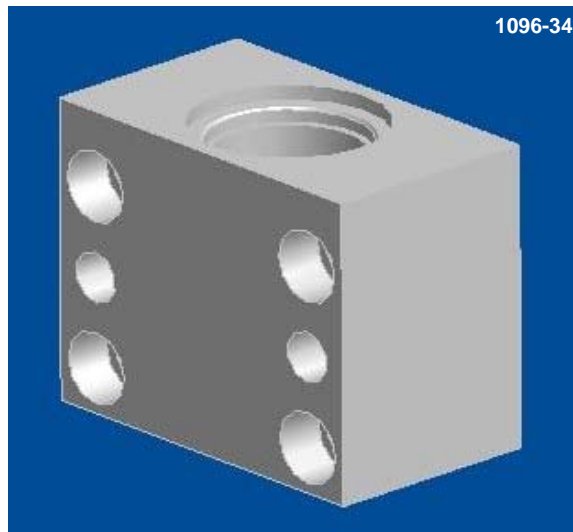
## FPM SMALL PIN AND BUSHING BLOCKS

### FPM SMALL PIN AND BUSHING BLOCKS

All FPM Small Pin and Bushing Blocks are manufactured to close tolerances to maintain a smooth, yet firm running fit.

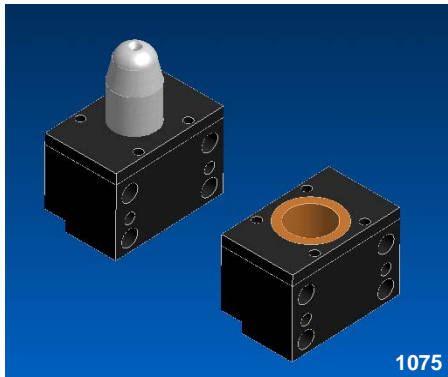
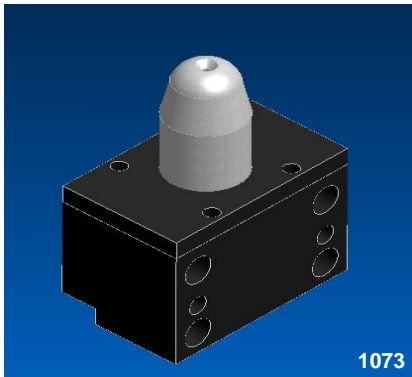
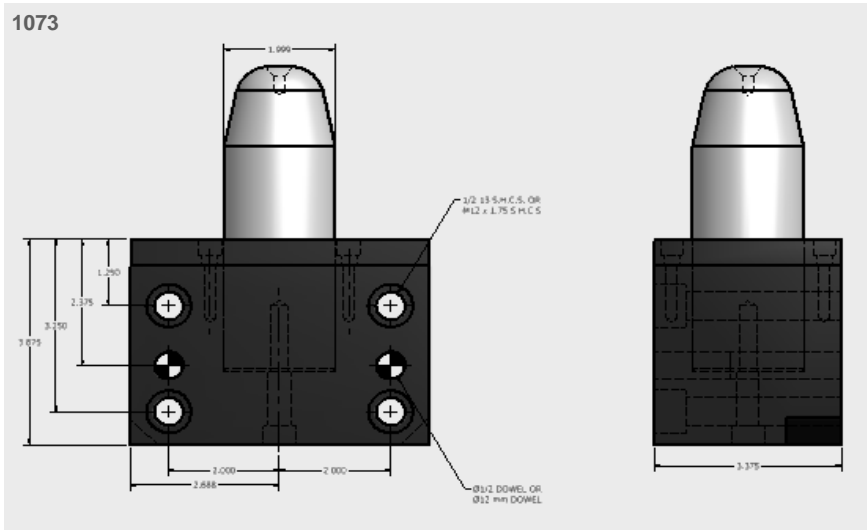
The 1096-34 blocks are used in conjunction with FPM screw in pins (1070-34) and bushings (1071-34).

The 1096-1 blocks are used in conjunction with FPM screw in pins (1070-1) and bushings (1071-1).



|               |                |
|---------------|----------------|
| COMPONENT NO. | 1096-34 (3/4") |
| COMPONENT NO. | 1096-1 (1")    |

# 2" SUPER PIN



## 2" SUPER PIN

The FPM Super Pin is made from precision ground hardened steel with a taper ground on the end for proper lead in.

FPM Super Pins come with an adjustable CR Steel crash pad. All FPM Pins and Bushings are manufactured to close tolerances to maintain a smooth, yet firm running fit. The base material is 6061 Aluminum.

Mounting bolts and dowels included.

Super dowel blocks can also be ordered with metric dowels and mounting bolts. When ordering metric specify M after part number.

To order individual 2" super pin specify component number 1073.

To order a 2" super pin and bushing set specify component number 1075.

- CAD 2D
- 1073
- 1075
- CAD 3D
- ACAD
- 1073
- 1075
- E-DRAWINGS
- 1073
- CNC
- 1073

CAD 2D

1074

1075

CAD 3D

ACAD

1074

1075

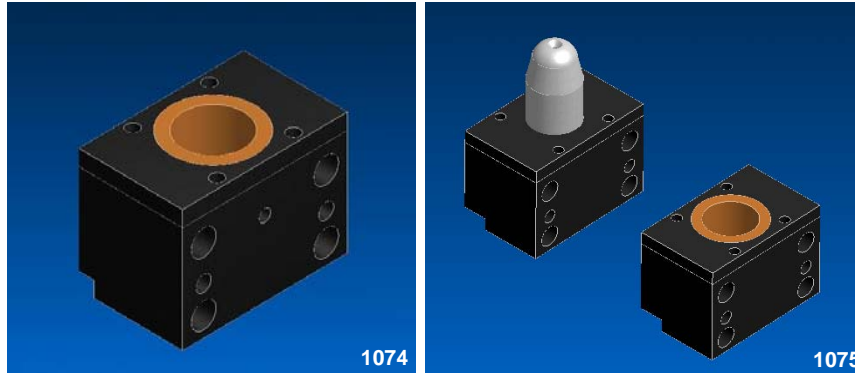
E-DRAWINGS

1074

CNC

1074

## 2" SUPER BUSHING / PIN / BUSHING SHIM



### 2" SUPER BUSHING

The FPM Super Bushing is made from aluminum bronze with self lubricating graphite plugs.

FPM Super Bushings come with an adjustable CR Steel crash pad. All FPM Pins and Bushings are manufactured to close tolerances to maintain a smooth, yet firm running fit.

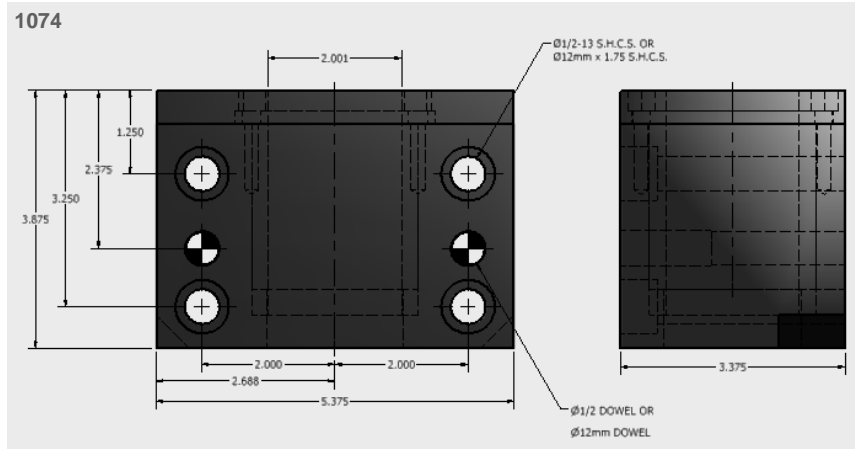
The base material is 6061 Aluminum.

To order individual 2" Super Bushing specify component number 1074.

To order a 2" Super Pin and Bushing Set specify component number 1075.

Mounting bolts and dowels included.

Super dowel blocks can also be ordered with metric dowels and mounting bolts. When ordering metric specify M after part number.



### 2" SUPER PIN & BUSHING SHIM

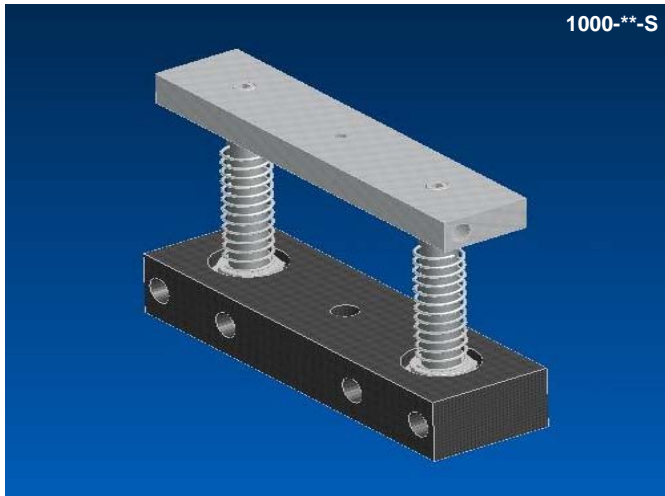
The FPM Super Pin & Bushing Shim is made of brass.

FPM Super Pin & Bushing shim are made to be placed under the CR steel crash pad. They are available in 2 sizes 0.002" or 0.005"

To order a 0.002" shim specify component number 1076.

To order a 0.005" shim specify component number 1077.

# PINCH BAR



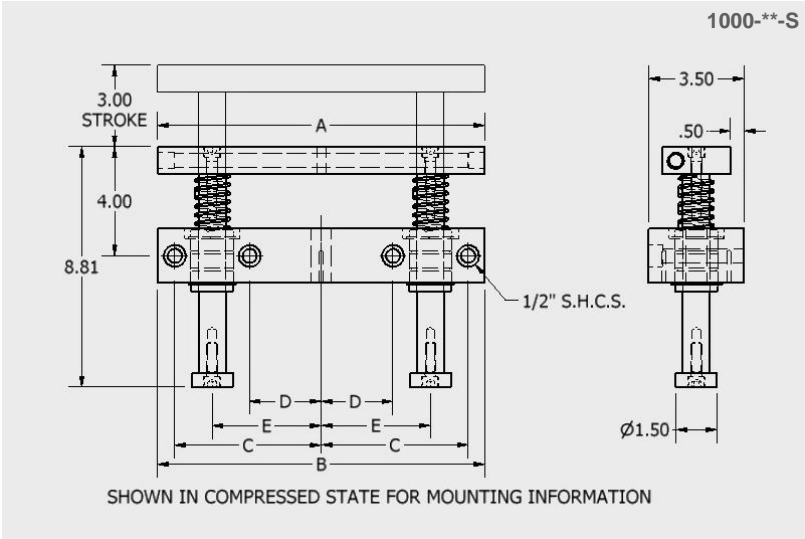
## PINCH BAR

The FPM Pinch Bars are available in both a spring loaded and an air activated version. Both versions utilize the same mounting and rod components allowing you to switch from spring to air and back as needed.

Utilizing hardened steel rods and self lubricating bushing reduces wear and binding.

Mounting base and Pinch bar are made from 6061 Aluminum.

*See the chart on page 19 for size and ordering information.*



CAD 2D

1000

CAD 3D

ACAD

1000-12-S

1000-16-S

1000-20-S

1000-24-S

1000-28-S

1000-32-S

1000-36-S

E-DRAWINGS

1000\*\*-S

CNC

1000-12

1000-16

1000-20

1000-24

1000-28

1000-32

1000-36

CAD 2D

1000

CAD 3D

ACAD

1000-12-A

1000-16-A

1000-20-A

1000-24-A

1000-28-A

1000-32-A

1000-36-A

E-DRAWINGS

1000-\*\*-A

CNC

1000-12

1000-16

1000-20

1000-24

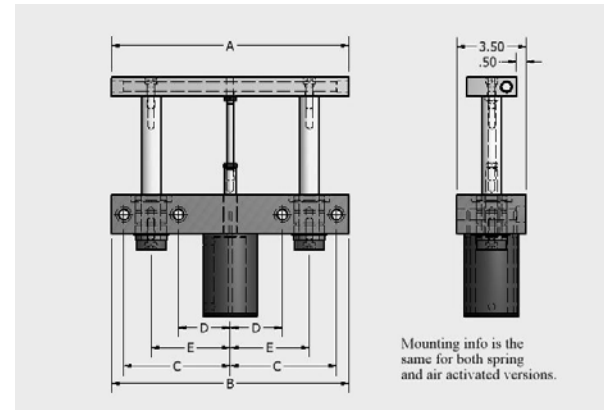
1000-28

1000-32

1000-36

PAGE 16

## PINCH BAR AIR ACTIVATED



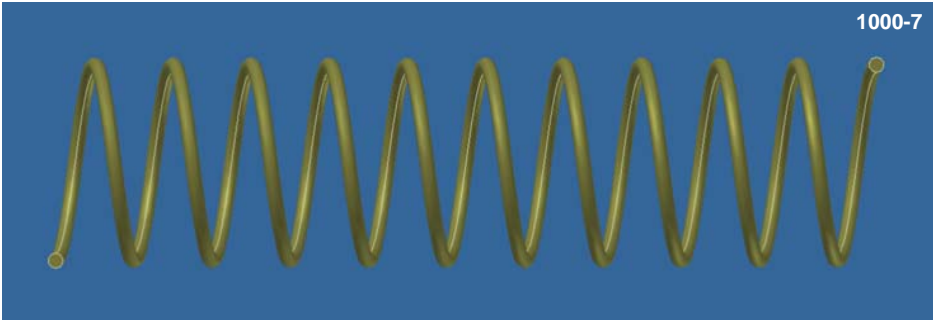
| COMPONENT NO. | "A" | "B" | "C"   | "D"   | "E"  |
|---------------|-----|-----|-------|-------|------|
| 1000-12-*     | 12" | 12" | 5.38" | 2.63" | 4.0" |
| 1000-16-*     | 16" | 12" | 5.38" | 2.63" | 4.0" |
| 1000-20-*     | 20" | 12" | 5.38" | 2.63" | 4.0" |
| 1000-24-*     | 24" | 12" | 5.38" | 2.63" | 4.0" |
| 1000-28-*     | 28" | 18" | 8.38" | 5.63" | 7.0" |
| 1000-32-*     | 32" | 18" | 8.38" | 5.63" | 7.0" |
| 1000-36-*     | 36" | 18" | 8.38" | 5.63" | 7.0" |

### PINCH BAR AIR ACTIVATED

\*When ordering pinch bars you must specify spring or air activated.

Please add "S" for spring and "A" for air. ex.: 1000-12-A for 12" air activated pinch bar.

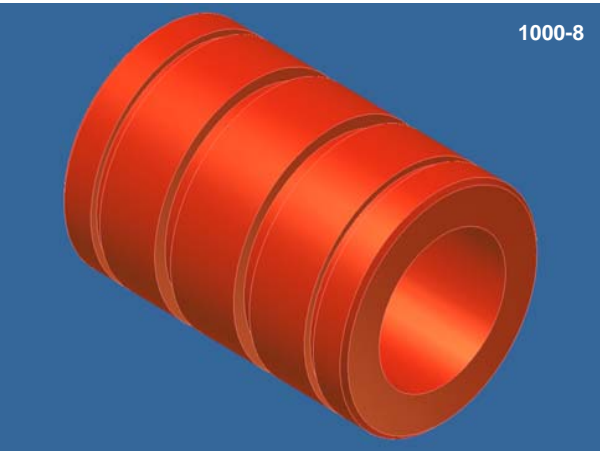
# PINCH BAR REPLACEMENT PARTS



Replacement spring for spring activated pinch bars.



Replacement snap ring for air and spring activated pinch bars.



Replacement bushing for air and spring activated pinch bars.

- CAD 2D
  - 1000-7
  - 1000-8
  - 1000-9
- CAD 3D
  - ACAD
    - 1000-7
    - 1000-8
    - 1000-9
- E-DRAWINGS
  - 1000-\*
  - CNC
    - 1000-7
    - 1000-8
    - 1000-9

CAD 2D

1008

CAD 3D

ACAD

1008-1

1008-2

1008-3

1008-4

E-DRAWINGS

1008

CNC

1008-1

1008-2

1008-3

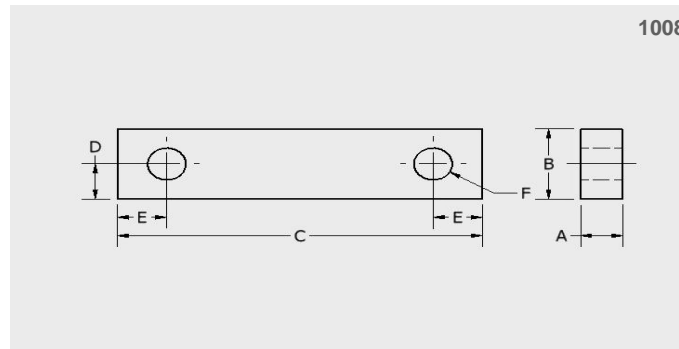
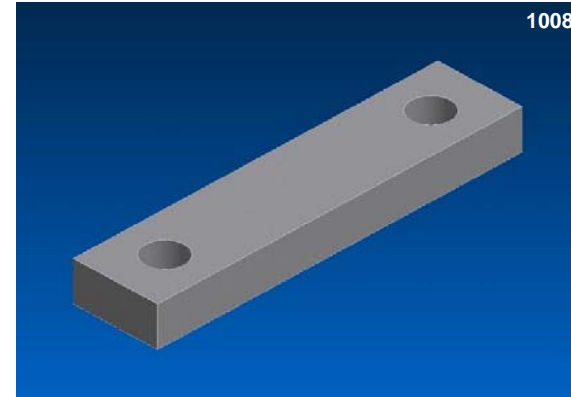
1008-44

# SHIPPING STRAP

## SHIPPING STRAP

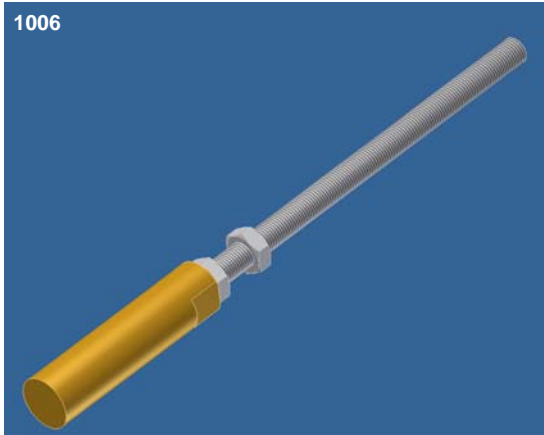
All FPM Shipping Straps are painted safety yellow so they can be easily identified when they are in place on the mold side.

Made from C.R. steel.



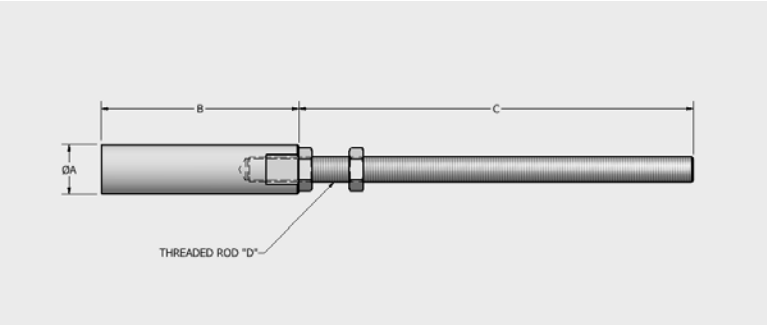
| COMPONENT NO. | "A"  | "B"  | "C"  | "D"  | "E"  | "F"  |
|---------------|------|------|------|------|------|------|
| 1008-1        | 0.75 | 1.50 | 6.50 | 0.75 | 0.88 | 0.69 |
| 1008-2        | 0.75 | 1.50 | 4.25 | 0.75 | 1.13 | 0.64 |
| 1008-3        | 0.25 | 1.50 | 4.50 | 0.75 | 0.75 | 0.53 |
| 1008-4        | 0.25 | 1.00 | 2.50 | 0.50 | 0.5  | 0.34 |

# KNOCK-OUTS



## KNOCK-OUTS

FPM Knock-Outs are made from C360 Brass for excellent bearing in the tool and can be easily matched to cavity surfaces. All Knock-Outs include threaded rods with jam nut for easy installation and adjustment.



| COMPONENT NO. | “A”  | “B” | “C” | “D”     |
|---------------|------|-----|-----|---------|
| 1006-5        | 1/2” | 3”  | 6”  | 3/8”-24 |
| 1006-58       | 5/8” | 3”  | 6”  | 3/8”-24 |
| 1006-75       | 3/4” | 3”  | 6”  | 3/8”-24 |
| 1006-1        | 1”   | 3”  | 6”  | 3/8-24  |

CAD 2D

1006

CAD 3D

ACAD

1006-5

1006-58

1006-75

1006-1

E-DRAWINGS

1006

CNC

1006-5

1006-58

1006-75

1006-1

CAD 2D

1007

CAD 3D

ACAD

1007-18

1007-316

1007-25

E-DRAWINGS

1007

CNC

1007-18

1007-316

1007-25

### BLOW NEEDLE

FPM Blow Needles are made from 303 stainless steel tubing and are easily cut to length and shaped as needed. Each needle comes with a threaded end and included jam nut.

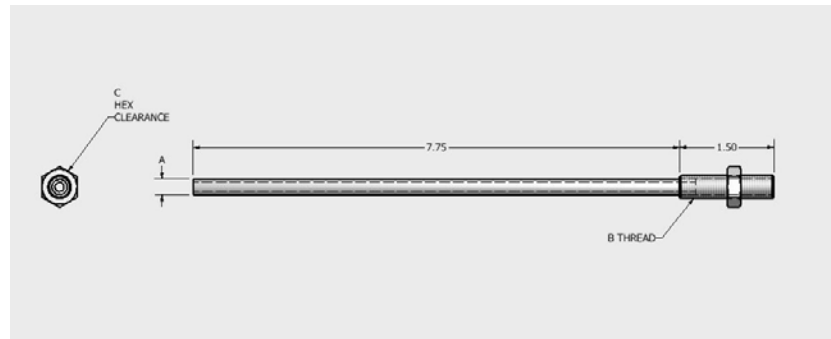
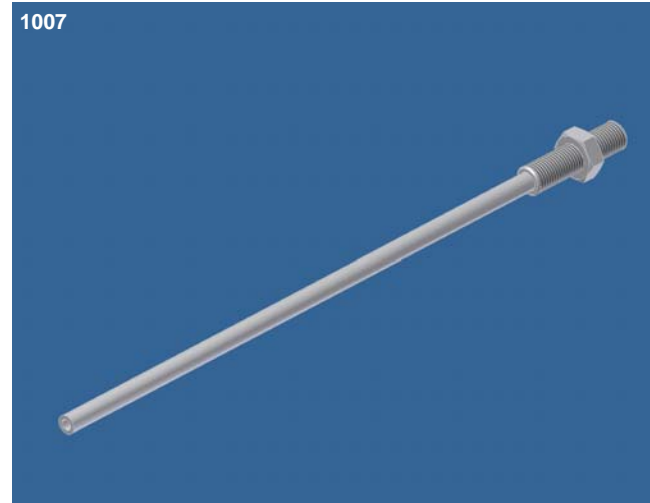
All needles and threads have been sized to match standard pneumatic pancake cylinders.

FPM has designed and manufactured a wide variety of needle shapes and sizes.

FPM can design and manufacture your custom blow needle. Call us for a quote.

## BLOW NEEDLE

1007



| COMPONENT NO. | "A"   | "B"     | "C"  |
|---------------|-------|---------|------|
| 1007-18       | 1/8"  | 5/16-24 | 5/8" |
| 1007-316      | 3/16" | 5/16-24 | 5/8" |
| 1007-25       | 1/4"  | 3/8"-24 | 3/4" |

# VENTS AND VENT CLEANER

2010  
2011  
2013

## VENTS

FPM vents are made from aluminum.

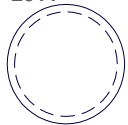
Slotted vents have 0.014" slots and 0.093" head thickness. Blank vents have 0.093" head thickness. Special order pin drilled vents have five 0.013" drilled holes and 0.093" head thickness. Vents are sold in package of 100.

2010



| COMPONENT NO. | 2010-18 | 2010-316 | 2010-14 | 2010-516 | 2010-38 | 2010-12 |
|---------------|---------|----------|---------|----------|---------|---------|
| DIA.          | 1/8"    | 3/16"    | 1/4"    | 5/16"    | 3/8"    | 1/2"    |
| LENGTH        | 0.26    | 0.26     | 0.26    | 0.26     | 0.26    | 0.26    |

2011



| COMPONENT NO. | 2011-18 | 2011-316 | 2011-14 | 2011-516 | 2011-38 | 2011-12 |
|---------------|---------|----------|---------|----------|---------|---------|
| DIA.          | 1/8"    | 3/16"    | 1/4"    | 5/16"    | 3/8"    | 1/2"    |
| LENGTH        | 0.26    | 0.26     | 0.26    | 0.26     | 0.26    | 0.26    |

## VENT CLEANER

Vent cleaners have a round hardwood handle 3/8" in diameter and 6" long. The tip is made from 0.010" spring steel and is tapered to allow cleaning of both large and small vents.



CAD 2D

1080-25

1080-5

1081

CAD 3D

ACAD

1080-25

1080-5

1081

E-DRAWINGS

1080

1081

CNC

1080-25

1080-5

1081

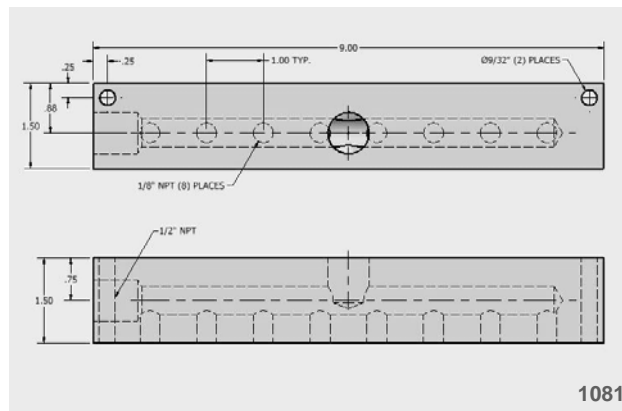
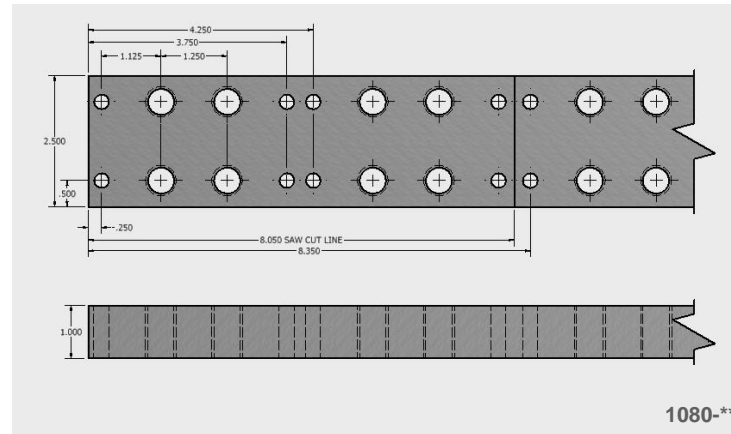
## AIR / HYDRAULIC MANIFOLD

### AIR/HYDRAULIC MANIFOLD

Manifolds are manufactured in 49" lengths and can be cut as needed allowing for multiple porting configurations. Manifolds can be purchase in 4" increments. Ports are tapped on both sides at 1/4" NPT or 1/2" NPT.

FPM Stock Manifolds are made from 6061 Aluminum.

| COMPONENT NO. | ITEM                    |
|---------------|-------------------------|
| 1080-25       | 1/4" NTP Ports Manifold |
| 1080-5        | 1/2" NTP Ports Manifold |

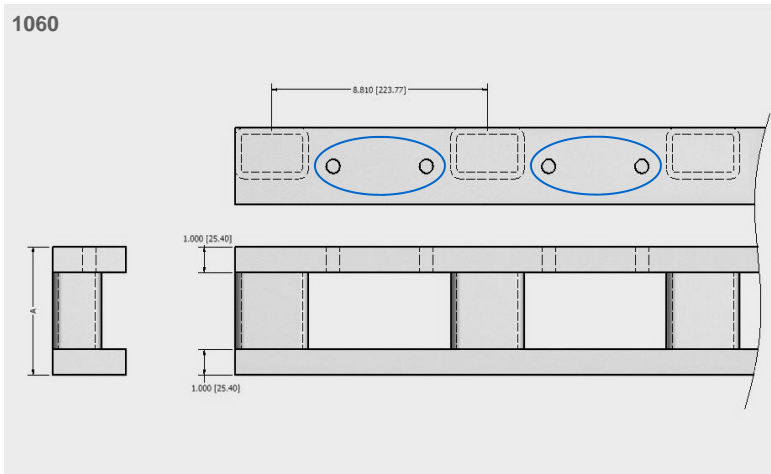


### 8 PORT AIR MANIFOLD

This design allows even air distribution to multiple air cylinders. The inlet port is tapped at 1/2" NPT and has eight 1/8" NPT feeders.

FPM Air Manifolds are made from 6061 Aluminum.

# RISERS



## RISERS

FPM Risers are fabricated from Steel in 10' lengths. This superior design increases overall strength while allowing easy access behind the mold.

Mounting holes shown are examples only.  
Will add custom mounting holes if required for additional cost.

| COMPONENT NO. | A  |
|---------------|----|
| 1060-4        | 4  |
| 1060-5        | 5  |
| 1060-6        | 6  |
| 1060-7        | 7  |
| 1060-8        | 8  |
| 1060-9        | 9  |
| 1060-10       | 10 |
| 1060-11       | 11 |
| 1060-12       | 12 |
| 1060-13       | 13 |
| 1060-14       | 14 |
| 1060-15       | 15 |

- CAD 2D
- 1060**
- CAD 3D
- ACAD
- 1060-4
- 1060-5
- 1060-6
- 1060-7
- 1060-8
- 1060-9
- 1060-10
- 1060-11
- 1060-12
- 1060-13
- 1060-14
- 1060-15
- E-DRAWINGS
- 1060

CAD 2D

2007

CAD 3D

ACAD

2007-H

2007-P

E-DRAWINGS

2007-H

2007-P

CNC

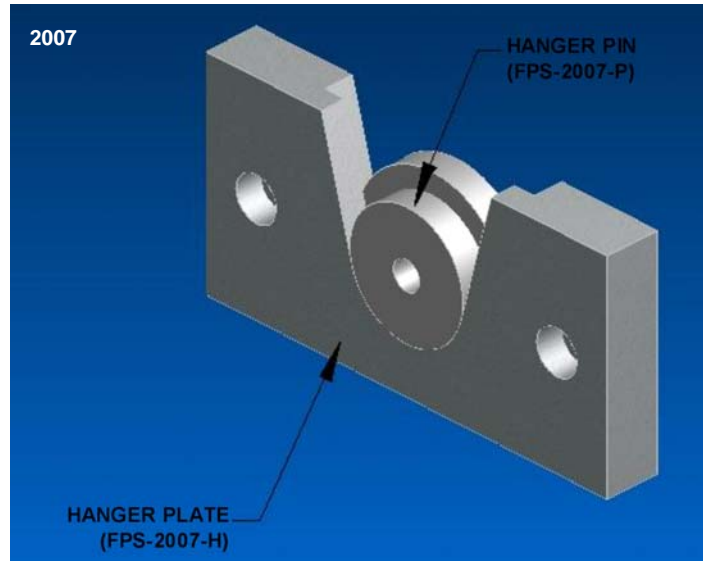
2007-H

2007-P

WORD

2025

## QUICK MOUNT / ID PLATES



### QUICK MOUNT

FPM Quick Mounts are designed to make installation of the tool quick and easy in the press.

The Hanger Pin can be added to any existing press. Allowing quick mounting with safety and ease.


Made from Cold Rolled Steel.

### ID PLATES

FPM ID Plates add clear identification of tooling for traceability. All ID Plates are created to the requirements you specify.

Please contact us for pricing and delivery.

2025

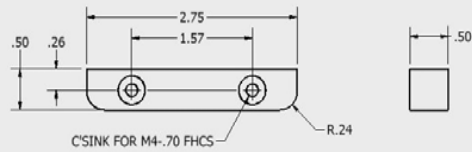


**TOOLING & AUTOMATION**  
Molds    Fixtures    Gages  
4711 N. State Route 19: Fremont, OH 43420: 1-800-376-6653  
www.molds-fixtures-gages.com: MADE IN USA

|                  |  |
|------------------|--|
| FPM Job #:       |  |
| Customer:        |  |
| Part Name:       |  |
| Cavity Number:   |  |
| Mold Weight:     |  |
| Project Manager: |  |
| Shrink:          |  |
| Finish Date:     |  |

## CRASH PAD & SHIM

3002

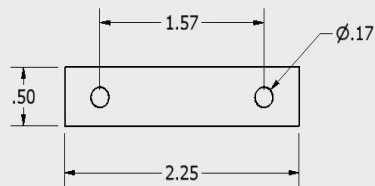


### CRASH PAD

FPM Crash Pads are made from A2 Steel.

The use of Steel crash pads can increase the life of the pinch edge.

3003



### CRASH PAD SHIMS

FPM Crash Pad Shims are made from 0.002 and 0.005 Brass shim stock.

| COMPONENT NO. | ITEM            |
|---------------|-----------------|
| 3003-2        | .002 THICK SHIM |
| 3003-5        | .005 THICK SHIM |

CAD 2D

3002

3003

CAD 3D

ACAD

3002

3003

E-DRAWINGS

3002

3003

CNC

3002

3003

CAD 2D

2002

2003

CAD 3D

ACAD

2002

2003

E-DRAWINGS

2002

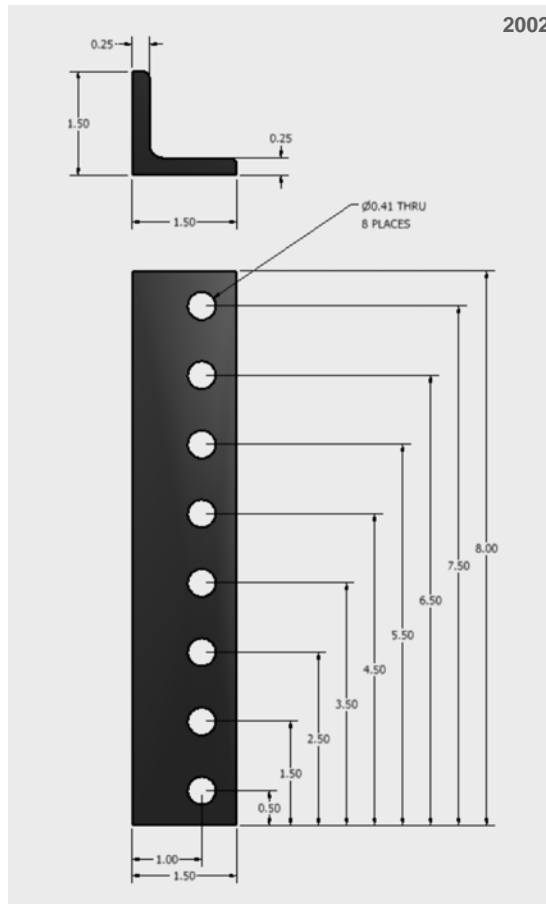
2003

CNC

2002

2003

## FORK TUBES / FORK TUBE MOUNTING FLANGE



FORK TUBE MOUNTING FLANGE

FPM Fork Tubes are made from 1 1/2" x 1 1/2" x 1/4" wall steel angle bracket.

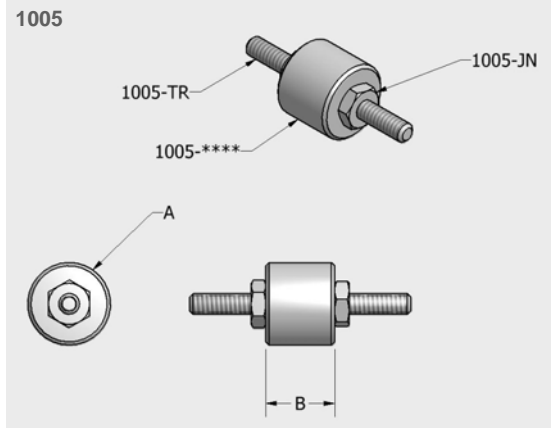
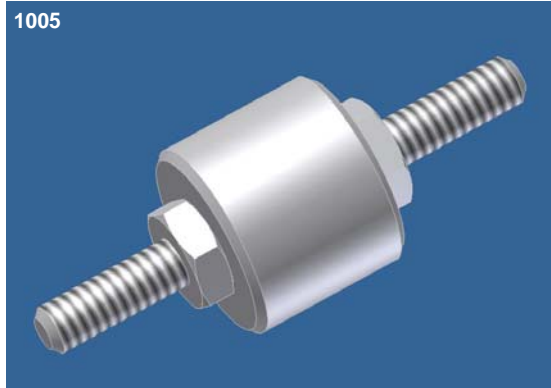
### FORK TUBES

FPM Fork Tubes are made from 8" x 3" x 5" long x 1/4" wall steel tubing.

The Fork Tubes have 1 1/2" x 1 1/2" x 1/4" wall steel angle bracket welded in place. The FPM Fork Tubes can be easily installed to the end of a riser using (3) 3/8" bolts.



## WATER BAFFLE



### WATER BAFFLE ACCESSORIES

FPM's Water Baffles are easily installed using standard threaded rods that can be cut to length and jam nuts.

### WATER BAFFLE

FPM's Water Baffles are made from 6061 Alum. These baffles are easily installed, removed and adjustable.

To place in water lines simply slip baffles onto threaded rod and lock in place with jam nuts. Once placed in water lines baffles will not shift from location. To remove, simply remove pipe plug and pull threaded rod out of water lines.

| COMP #    | "A"    | "B"  |
|-----------|--------|------|
| 1005-38   | 3/8"   | 5/8" |
| 1005-716  | 7/16"  | 5/8" |
| 1005-12   | 1/2"   | 5/8" |
| 1005-916  | 9/16"  | 5/8" |
| 1005-1116 | 11/16" | 5/8" |
| 1005-34   | 3/4"   | 5/8" |

| COMP #  | ITEM                 |
|---------|----------------------|
| 1005-TR | THREAD ROD-6' LENGTH |
| 1005-JN | JAM NUT-PKG. OF 25   |

Call for quote.

CAD 2D

1005

CAD 3D

ACAD

1005-38

1005-716

1005-12

1005-916

1005-1116

1005-34

E-DRAWINGS

1005

CNC

1005-38

1005-716

1005-12

1005-916

1005-1116

1005-34

## **PRICING TERMS**

All prices listed in U.S. dollars. All pricing is subject to change without notice. All quotes are valid for 30 days.

## **CREDIT & PAYMENT**

### **PAYMENT TERMS**

Terms of payment are as indicated below and a service charge of up to 2% of invoice price per month may be added if payment is not made in accordance with such terms. Should FPM be issued a purchase order for the services or goods described for which includes terms or conditions which are inconsistent with or in addition to the terms hereof, any such inconsistent term or conditions shall not be applicable unless expressly consented to in writing by an authorized representative of FPM.

### **PAYMENT METHODS**



Cash, Money Orders, Cashier Checks, C.O.D.

When paying by Check or Money order make out to FPM Tooling & Automation.

## **DELIVERY**

### **ROUTING/SHIPPING**

Parcel shipments will be routed via FPM's carrier of choice at customer's expense. An alternate carrier may be used at the customer's request if a valid account number is provided.

## **ORDERING INFORMATION**

### **PHONE ORDERS**

Call Monday through Friday 8:00 a.m. to 4:30 p.m. at 1-800-376-6653 or fax at 1-419-332-2494.

[molds-fixtures-gages.com](http://molds-fixtures-gages.com)